



# MONTHLY MEMBERSHIP PROGRESS REPORT

District 322 E

Results as of: 04/30/2018

GMT: SWADESH RANJAN SAHA

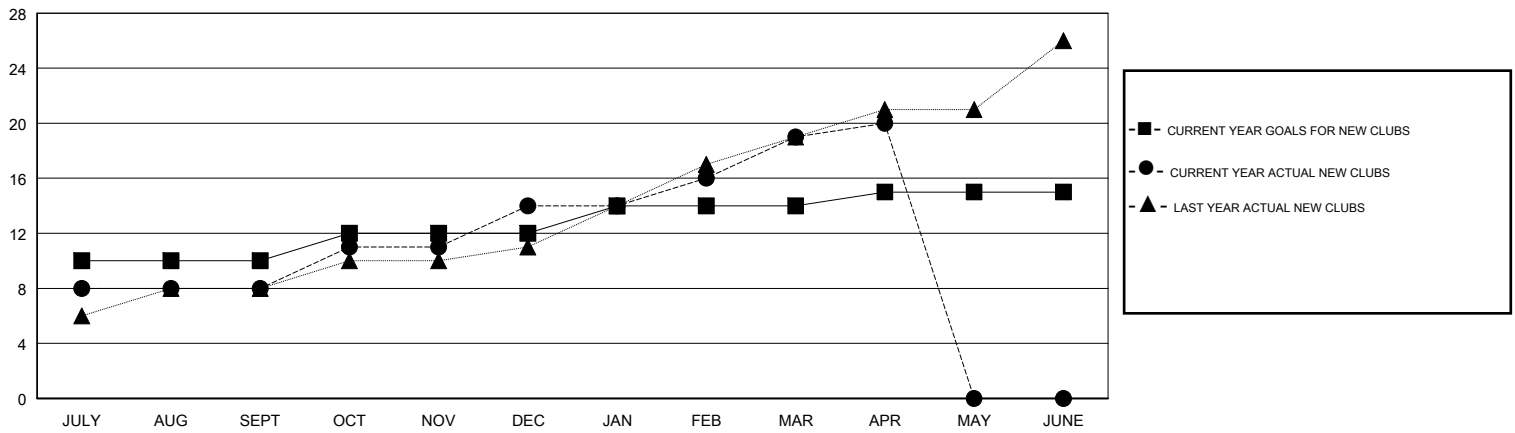
LOCATION INDIA

GMT CA

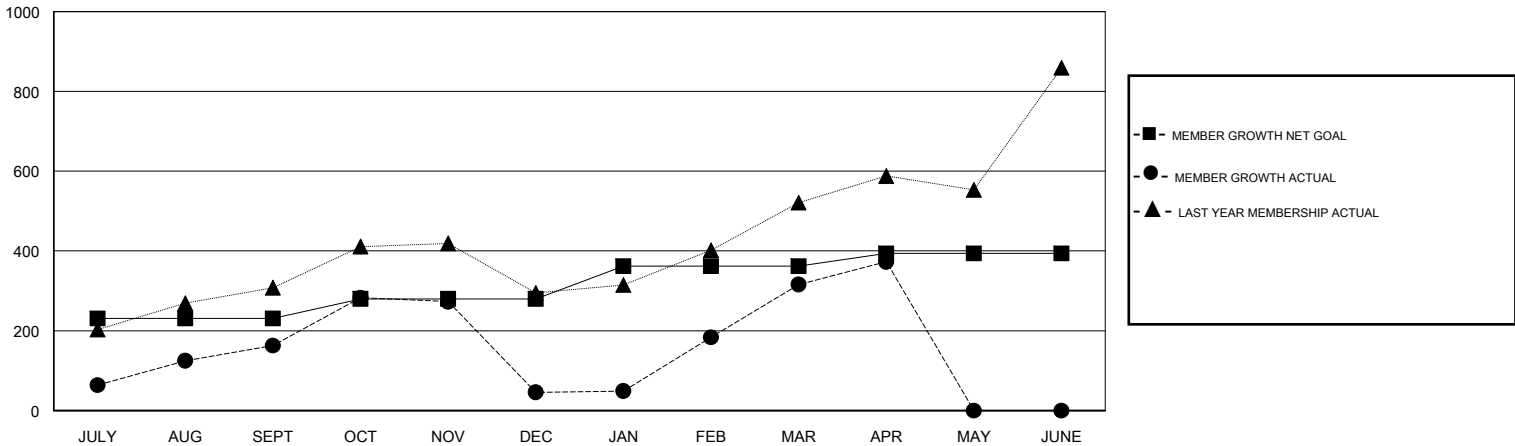
Clubs			
RESULTS FOR 2017-2018			
QUARTER	NEW CLUB GOAL	NEW CLUBS	DROPPED CLUBS
JULY/AUG/SEPT	10	8	1
OCT/NOV/DEC	2	6	11
JAN/FEB/MAR	2	5	0
APR/MAY/JUNE	1	1	0

Members			
RESULTS FOR 2017-2018			
QUARTER	MEMBER GROWTH NET GOAL	MEMBER GROWTH ACTUAL	DROPPED MEMBERS ACTUAL (including transfers)
JULY/AUG/SEPT	231	385	197
OCT/NOV/DEC	49	237	350
JAN/FEB/MAR	82	399	61
APR/MAY/JUNE	32	86	26

GOALS AND ACTUAL NEW CLUBS CUMULATIVE



GOALS AND ACTUAL MEMBERS CUMULATIVE



DROPPED CLUBS: 12

77 CLUBS OF 136 ADDED 1 OR MORE NEW MEMBERS

GENDER DISTRIBUTION	
MALE	2,851 (67.95%)
FEMALE	1,345 (32.05%)
Women Percentage Fiscal Year Goal: 30%	

DROPPED MEMBERS	
DECEASED	5
CLUB CANCELLED	301
OTHER	328
<b>TOTAL</b>	<b>634</b>

[CLICK HERE FOR CUMULATIVE MEMBERSHIP DATA](#)

TOTAL FAMILY UNIT MEMBERS	1,541
FAMILY MEMBERS PAYING HALF DUES	801